

Heading Towards Innovation
PROCUT®



Manufacturer & Exporter of all types of commercial & Industrial Food Processing Equipment



Restaurants

Hotel

Canteen

Fast-Food Chain

Hospitality

Bars & Club

PRODUCTS OF:-

RATNA
MACHINE TOOLS

ISO 9001:2015 CERTIFIED COMPANY



www.procut.co.in

About Us



"PROCUT" is Bhavnagar (Gujarat, India) based leading manufacturing company of commercial kitchen equipment. With many years of experience in food industry, we have established ourselves as a trusted provider of quality machinery with Band "PROCUT"

Through the inquisitive spirit of our researchers, alongside our desire to contribute to the betterment of overall performance of organization, we're working to create a competitive product and quickly and consistently deliver innovative products.

Our success is the result of the hard work, highly qualified and efficient team of professionals, we are committed to provide our customers with the best support and after sales services.

Manual Potato Jali/Lattice/Waffle Chips Cutting Machine



Body	Fully Aluminium
Cutting Cap.	45-50 Kg/Hour
Electric Motor	0.5 HP
Cutting Blade	S.S 304
Weight	35 kg
Dimension	27 x 17 x 20 (Inch)



Semi-Automatic Potato Jali/Lattice/Waffle Chips Cutting Machine

Body	Aluminium
Movable Trolley	S.S 304
Cutting Cap.	80-90 Kg/Hour
Electric Motor	1.0 HP (Godrej)
Cutting Blade	S.S 304
Weight	90 Kg
Dimension	40 x 21 x 36 (Inch)



Automatic Potato Jali/Lattice/Waffle Chips Cutting Machine



Body	Aluminium
Movable Trolley	S.S 304
Cutting Cap.	125 Kg/Hour
Electric Motor	1.0 HP (Godrej)
Cutting Blade	S.S 304
Air Compressor	Yes (Pneumatic Pressing)
Weight	120 Kg
Dimension	42 x 25 x 40 (Inch)

Potato Peeler Machine



Model	5 Kg	10 Kg	15 Kg	20 Kg	30 Kg	50 Kg
Peeling Cap.	70-100 Kg/Hour	150-200kg/Hour	200-300 Kg/Hour	300-600 Kg/Hour	700-900 Kg/Hour	1300 Kg/Hour
Electric Motor	0.5 HP	1 HP	1 HP	1.5 HP	2 HP	3 HP
Weight	37 Kg	52 Kg	68 Kg	74 Kg	100 Kg	120 Kg
Dimension	13 x 15 x 16 (Inch)	26 x 17 x 32 (Inch)	30 x 18 x 36 (Inch)	30 x 18 x 41 (Inch)	34 x 20 x 46 (Inch)	38 x 24 x 50 (Inch)



Potato Slicer Machine (Plain, Ruffles & Sticks)

Body	S.S 304
Cutting Cap.	150-200 Kg/Hour
Electric Motor	1.0 HP
Cutting Die	Plain, Ruffles & Sticks
Weight	50 kg
Dimension	23 x 15 x 28 (Inch)



Potato Chips Dryer Machine (De-Watering & De-oiling Machine)



Model	Tilting (15, 30 & 50 kg)
Body	S.S 304
Drum Cap.	15, 30 & 50 Kg
Electric Motor	1.0, 1.5 & 2.0 HP
Weight	87, 100 & 130 kg
Dimension	Vary

Potato Chips Spice Coating Machine (Tilting)



Model	20" (Tilting)	27" (Fix)
Body	S.S 304	S.S 304
Mixing Cap.	80-100 Kg/Hour	150-200 Kg/Hour
Drum Size	18 x 20"	24 x 27"
Electric Motor	0.5 HP	1.0 HP
Power	220/440 v	220/440V
Weight	70 kg	135 Kg
Dimension	50 x 31 x 37 Inch	55 x 35 x 45 Inch



Body	S.S 304
Usage	Spice Mixing & Coating on Potato Chips & Banana Chips
Mixing Cap.	200-300 Kg/Hour
Electric Motor	2.0 HP
Power	220/440 v
Weight	210 Kg
Dimension	55 x 31 x 50 (Inch)

Banana/Plantain Chips Cutting Machine

Body	S.S & Aluminium
Cutting Cap.	180-200 Kg/ Hour
Electric Motor	1.0 HP (A/C Drive)
Cutting Dies	3 (Round, Oval & Long Chips)
Weight	55 Kg
Dimension	36 x 14 x 25 (Inch)



Finger Chips Cutting Machine

Body	S.S 304
Cutting Cap.	80-100 Kg/Hour
Electric Motor	0.5 HP
Cutting Size	10 x 10 mm 7 x 7 mm
Weight	35 kg
Dimension	24 x 12 x 19 (Inch)



Namkeen/Farsan Making Machine

Model No.	7"	9"
Motor	0.5 HP	1.0 HP
Jali (Dies)	10	10
Weight	54 Kg	78 Kg
Dimension	38 x 12 x 19 (Inch)	45 x 15 x 20 (Inch)



Fafda Making Machine



Model	Regular	Jumbo (Big)
Motor	0.5 HP	1.0 HP
Weight	16 Kg	27 Kg
Dimension	18 x 10 x 15 (Inch)	16 x 12 x 19 (Inch)



2 in 1 Pulverize Machine

Model	2 HP	3 HP	5 HP
Chamber Size	10" x 4"	10" x 5"	12" x 7"
Motor	2 HP	3 HP	5 HP
Capacity	12-15 Kg/Hour	20-25 Kg/Hour	30-35 Kg/Hour
Weight	45 Kg	51 Kg	95 Kg
Dimension	24 x 16 x 31 (Inch)	23 x 13 x 35 (Inch)	27 x 17 x 47 (Inch)



Vegetable Cutting Machine



Body	Aluminium & S.S Body
Capacity	150-200 Kg/Hour
Electric Motor	1.0 HP
Cutting Dies	8 Dies (Slicing, Dicing, Chips & Cubes)
Weight	37 kg
Dimension	20 x 12 x 22 (Inch)



Body	Aluminium & S.S Body
Capacity	600-700 Kg/Hour
Electric Motor	2.0 HP
Cutting Dies	8 Dies (Slicing, Dicing, Chips & Cubes)
Weight	72 kg
Dimension	32" x 16" x 25" (Inch)



Chilly Cutter Machine



Body	S.S Body	S.S Body
Capacity	200 Kg/Hour	450 Kg/Hour
Electric Motor	1.0 HP	2.0 HP
Cutting Dies	4 Nos.	4 Nos.
Weight	26 kg	52 Kg



Gravy Making Machine



Motor	Capacity	Weight	Dimension (Inch)
1 HP	10-15 Kg	20 Kg	18 x 12 x 24
2 HP	35-40 Kg	35 Kg	21 x 15 x 26
3 HP	100-130 Kg	40 Kg	22 x 15 x 27
5 HP	200-300 Kg	65 Kg	24 x 17 x 32
7 HP	500-600 Kg	140 Kg	35 x 25 x 45



Manual Bhaji Cutter Machine



Body	M.S.
Cutting Mode	Manual
Cutting Ingredients	Methi, Kothanbir, Palak etc.
Weight	6 Kg
Dimension	6 x 9 x 15 (Inch)



Manual Vegetable Cutter Machine

Body	Aluminium
Cutting Type	Onion, Tomatoes, Cabbage, Beetroot etc.
Weight	5 Kg



Oil Extruder/Expeller Machine

Body	S.S 304
Capacity	2-5 Kg/Hour
Usage	Sunflower, Peanut, Soybean, Walnut, Almond, Mustard etc.
Electric Motor	0.25 HP
Input Voltage	220-240 volt/AC
Weight	12 kg
Dimension	20 x 8 x 10 (Inch)



Manual Dry Fruit Cutting Machine



Body	Aluminium
Cutting Method	Manual (Hand Operated)
Cutting Type	Slice, Tukda
Weight	2 kg

Heavy Duty Mixer/Grinder Machine



Model	Motor	RPM	Weight	Dimension
2 Litre	0.5 HP	2880	11 Kg	11" x 8" x 19"
3 Litre	1.5 HP	2880	26 Kg	10" x 11" x 23"
5 Litre	1.5 HP	2880	27 Kg	14" x 11" x 25"
10 Litre	2 HP	2880	32 Kg	13" x 12" x 29"
14 Litre	3 HP	2880	48 Kg	18" x 18" x 38"

Sugarcane Juicer Machine



Body	S.S
Roller	3 (Stainless Steel)
Extraction Percentage	85-90% in a single pass
Power	220 v
Motor	1 HP
Weight	105 kg



Juicer Machine



Body	Aluminium & S.S
Application	Orange, Pineapple, Grape, Sweet Lemon Etc.
Capacity	20-25 Glass Per Hour
Power	220 v
Motor	0.5 HP
Weight	28 kg
Dimension	17 x 25 x 12 (Inch)



Garlic Peeling Machine (Commercial & Industrial)



Body	S.S 304
Peeling Cap.	12-15 kg/hour
Electric Motor	0.50 HP
Weight	20 kg
Dimension	10 X 10 X 12 (Inch)



Body	S.S 304
Peeling Cap.	40-50 kg/hour
Electric Motor	3 HP
Air Compressor	Yes, 10 HP
Damage of Garlic	No
Weight	90 KG
Dimension	30 X 27 X 59 (Inch)



Ginger Peeling Machine

Body	S.S. 304
Peeling Cap.	30-35 Kg/Hour
Electric Motor	1.0 Hp
Power	220/440 v
Weight	30 Kg



French Fries Cutting Machine



Body	Aluminium
Chips Size	5 mm, 7 mm, 10 mm & 12 mm

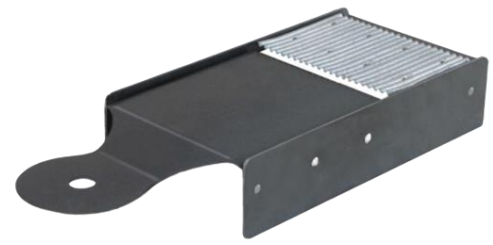
Manual Potato Chips Cutter (Home Use)



Plain Potato Chips



Plain, Ruffles & Jali/Lattice Potato Chips

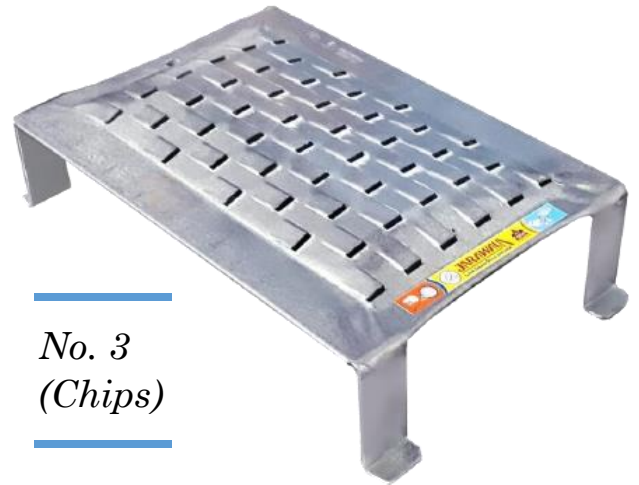


Potato Jali/Lattice Potato Chips

Hand Operated (Khamni) For Chips & Lacha



No. 5 & 3




No. 3 (Chips)




Frying Spoon



 Procut.foodmachinery@gmail.com

 +91-9033305257

+91-9558569797

 322/3, Chitra GIDC, Opp. Nilkamal Weight
Bridge, Bhavnagar – 364004, Gujarat, India

 www.procut.co.in

 www.facebook.com/procut.co.in



available at
amazon

Flipkart 